

Anex 1

Customer of Wood Mark

Furniture pieces:

1. Tv elements

Tv elements 275x412x7.2 cm installed on recessed wall moldings made from melamine faced chipboard d=18mm in between which the cables for LED lighting run. The back of the decorative triangle pieces is made out of 6 pieces of black melamine faced chipboard model 190E, set vertically and with a visible joint. The decorative triangle elements in the front are made out of melamine faced chipboard model H3157 ST12 d=18mm (banded with ABS edge band on all edges). Besides these pieces made from melamine faced chipboard, decorative Laminam pieces are also installed d=12mm. In order for the thickness to be similar between the melamine faced chipboard and the Laminam pieces, the Laminam is glued on top of an auxiliary piece with a thickness of d=6mm made from MDF and banded with an edge band similar to the design of the Laminam board itself. Under some parts of the paneling appears an LED lighting marked with yellow in the drawings. The LED lighting should be installed on a recessed (3cm from each side) piece of melamine faced chipboard with a thickness of d=18mm banded with a black edge band by an electrician appointed by the investor. The thickness of the wall paneling is the largest i.e. 7.2cm in the parts which contain the LED lightings.

Material model used for the background: Melamine faced chipboard 190 PE d=18mm

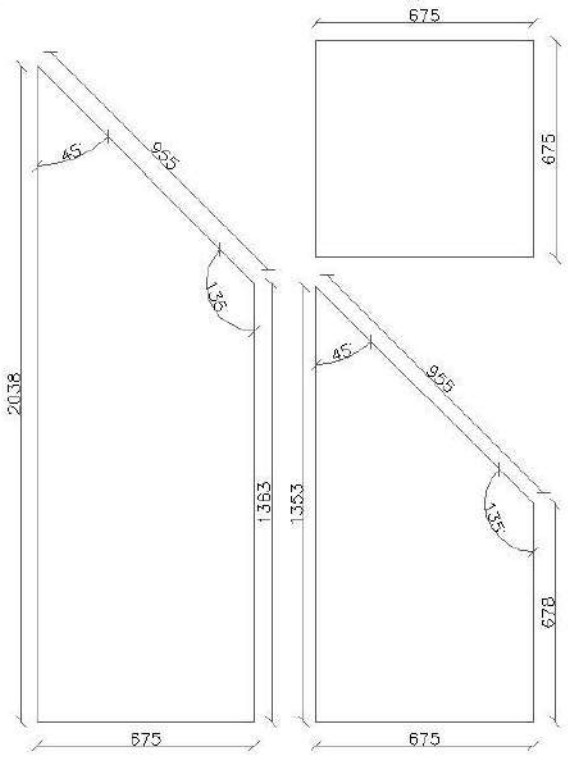
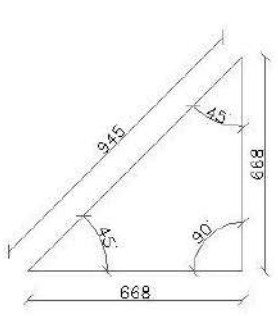
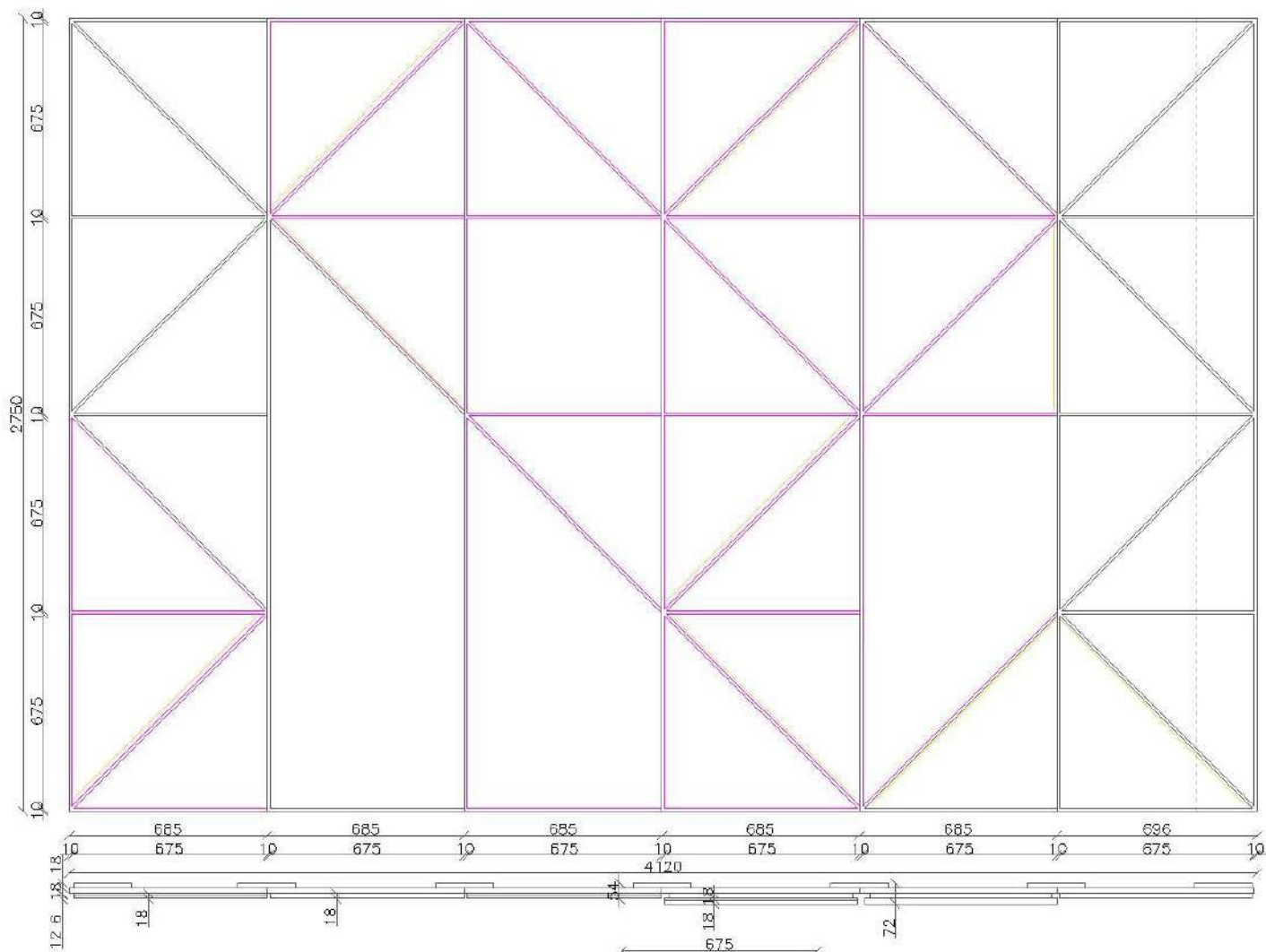
Material model used for the front: Melamine faced chipboard H3157 ST12 d=18mm

Material model for the drawn in wall fixings for the LED: MDF d=6mm with a black edge band

Material model for the auxiliary pieces for the Laminam pieces: Stock melamine faced chipboard d=18mm with a black edge band

Laminam model: Travertino Grigio 12mm (if possible Travertino Grigio 6mm)





2. Waiting area

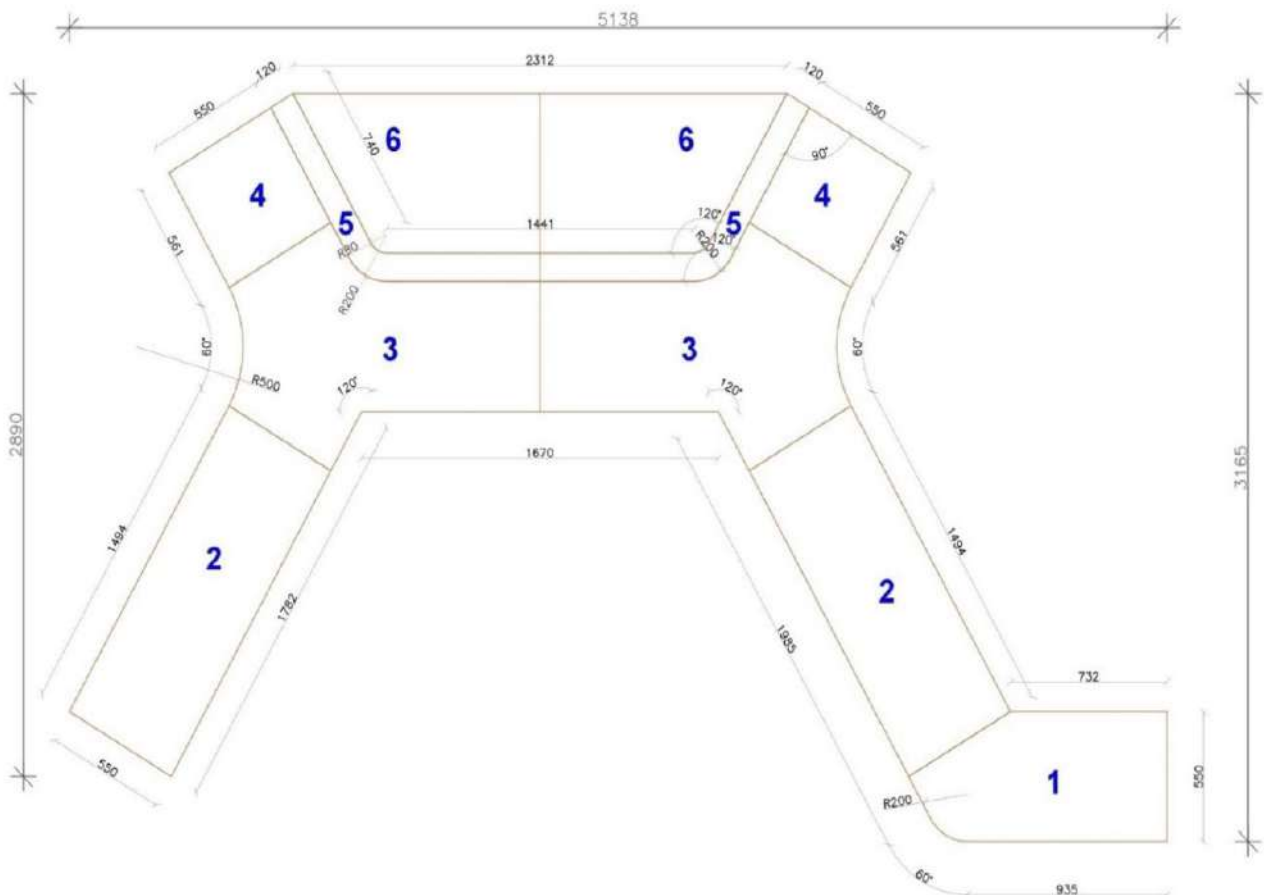
Waiting area with gross dimensions of 80/48 x 514 x 316 cm consisted of modular upholstered benches-stools. The frame of the benches is made from stock melamine faced chipboard, set on adjustable furniture legs with a height of 3cm. A layer of foam cushion filling with a thickness of $d=1\text{cm}$ is then wrapped around the edges of the frame, while a layer of foam cushion filling with a thickness of $d=5\text{cm}$ is added to the top. The benches-stools are upholstered with an upholstery fabric model Berlin Cream, while the two segments of the backrest (position 5) are upholstered with an upholstery fabric model Berlin Fog. The modules are joined together by a sofa connector brackets.

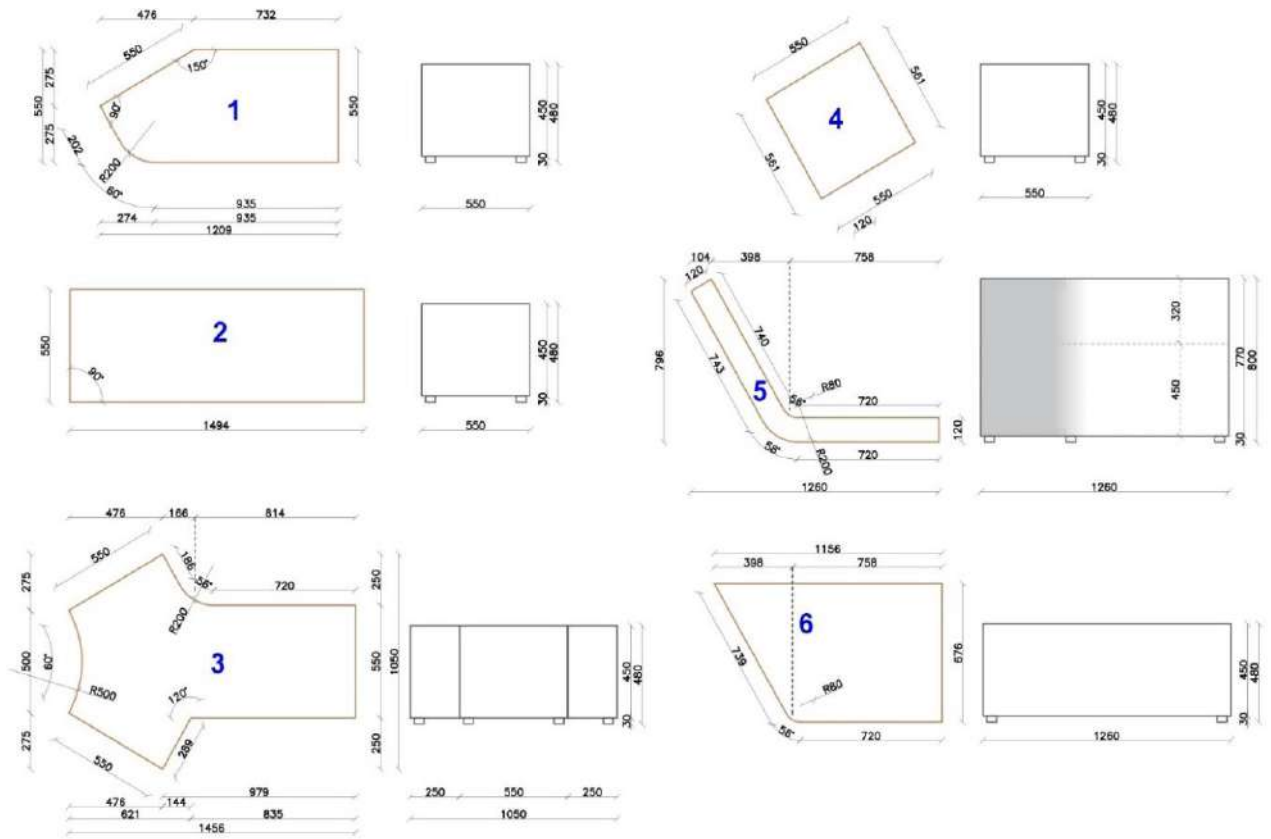
Material model for the upholstery fabric: Berlin Cream and Berlin Fog – backrest position 5

Material model for the frame: Stock melamine faced chipboard

Material model for the cushioning: foam 1/5 cm

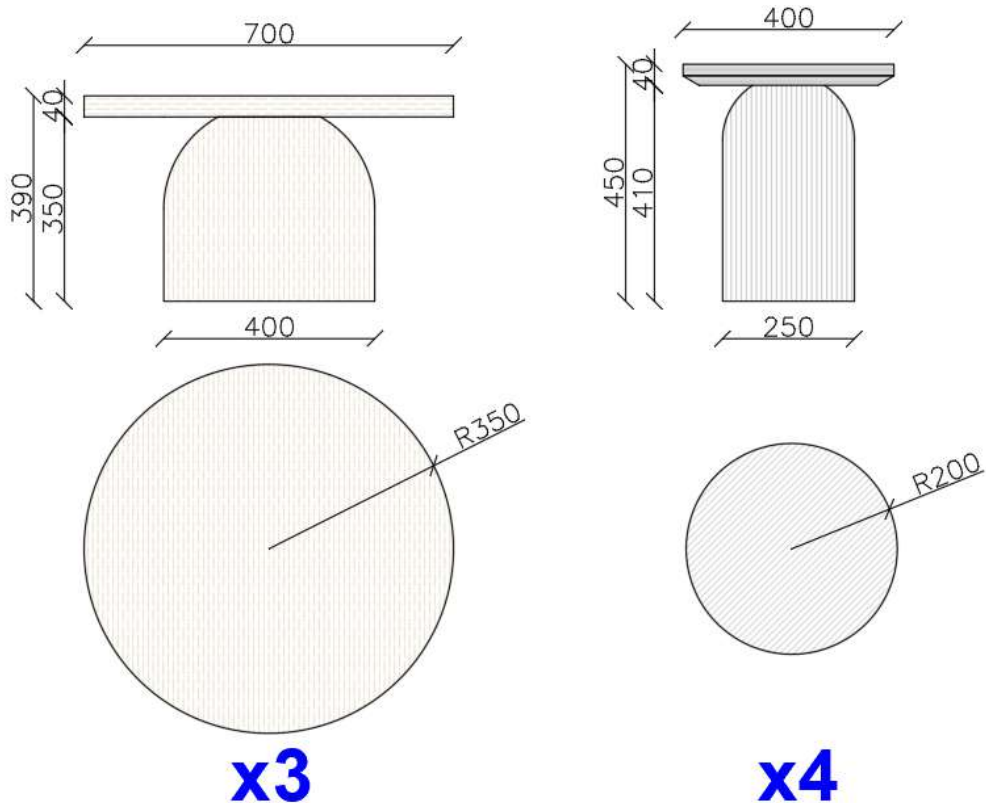
Material model for joining: sofa connector brackets





3. Coffee tables

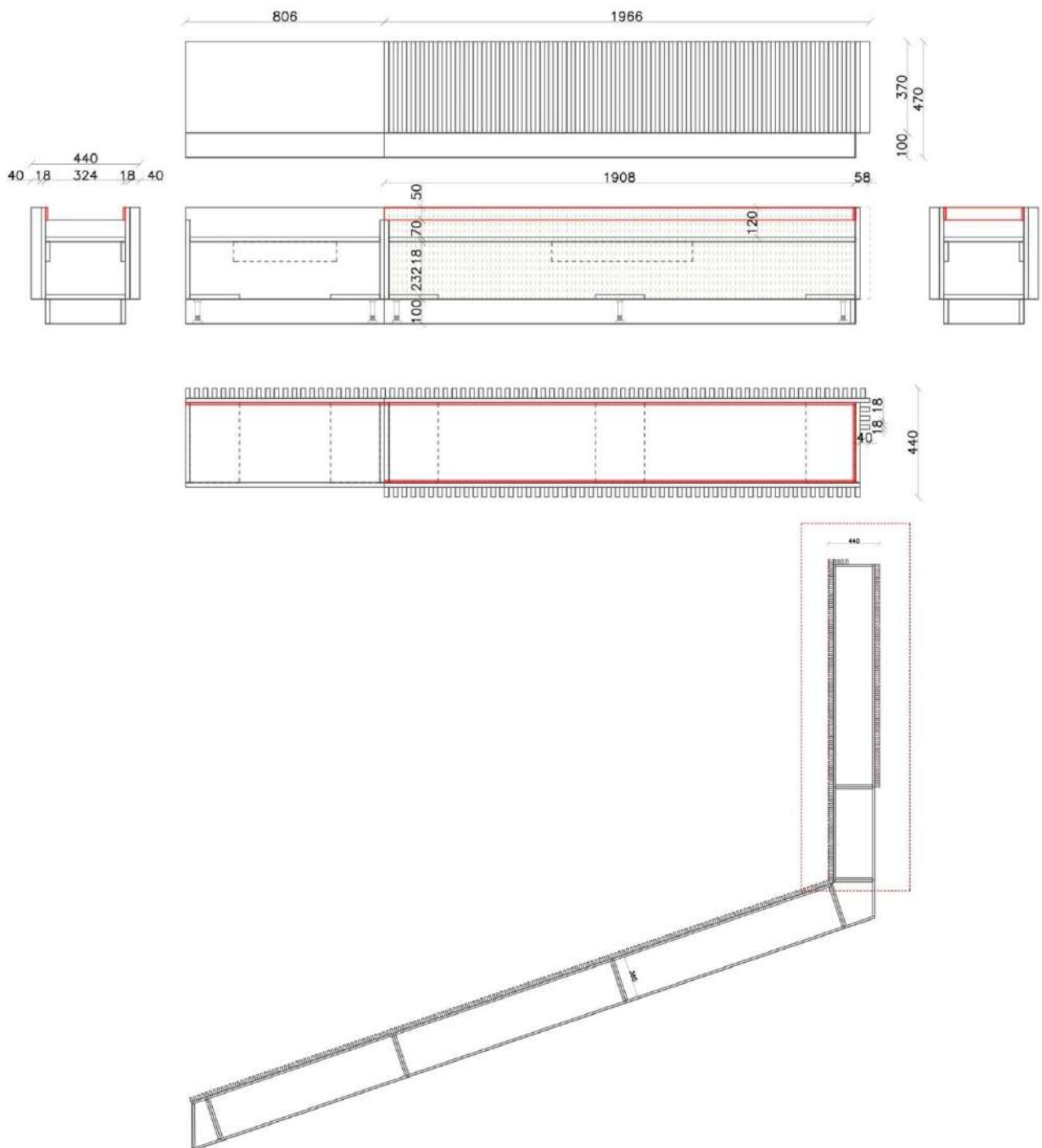
Coffee tables – model A (39 x 70) made from solid oak wood with a transparent matt lacquer finish and model B- (45 x 40) made from solid oak wood painted in white with a smooth matt finish.



Material for coffee table model A: Solid oak wood – natural with a transparent matt lacquer finish
Material for coffee table model B: Solid oak wood painted in white with a smooth matt finish

4. Planter box for artificial flowers

Planter box for artificial flowers with a total length of 9.4 m in the shape of joined boxes made from melamine faced chipboard model H3157 ST12 d=18mm (banded with ABS edge band on all edges). On the visible outer side there is an applied slat wall detail made from the same melamine faced chipboard model. This applied detail is installed with screws. The screws from the inner side (in the top visible section) are hidden with black melamine faced chipboard moldings d=8mm – marked with red in the drawings. The planter boxes are set on 10cm adjustable furniture legs on which a 10cm toe kick made from melamine faced chipboard model 190 PE is installed.



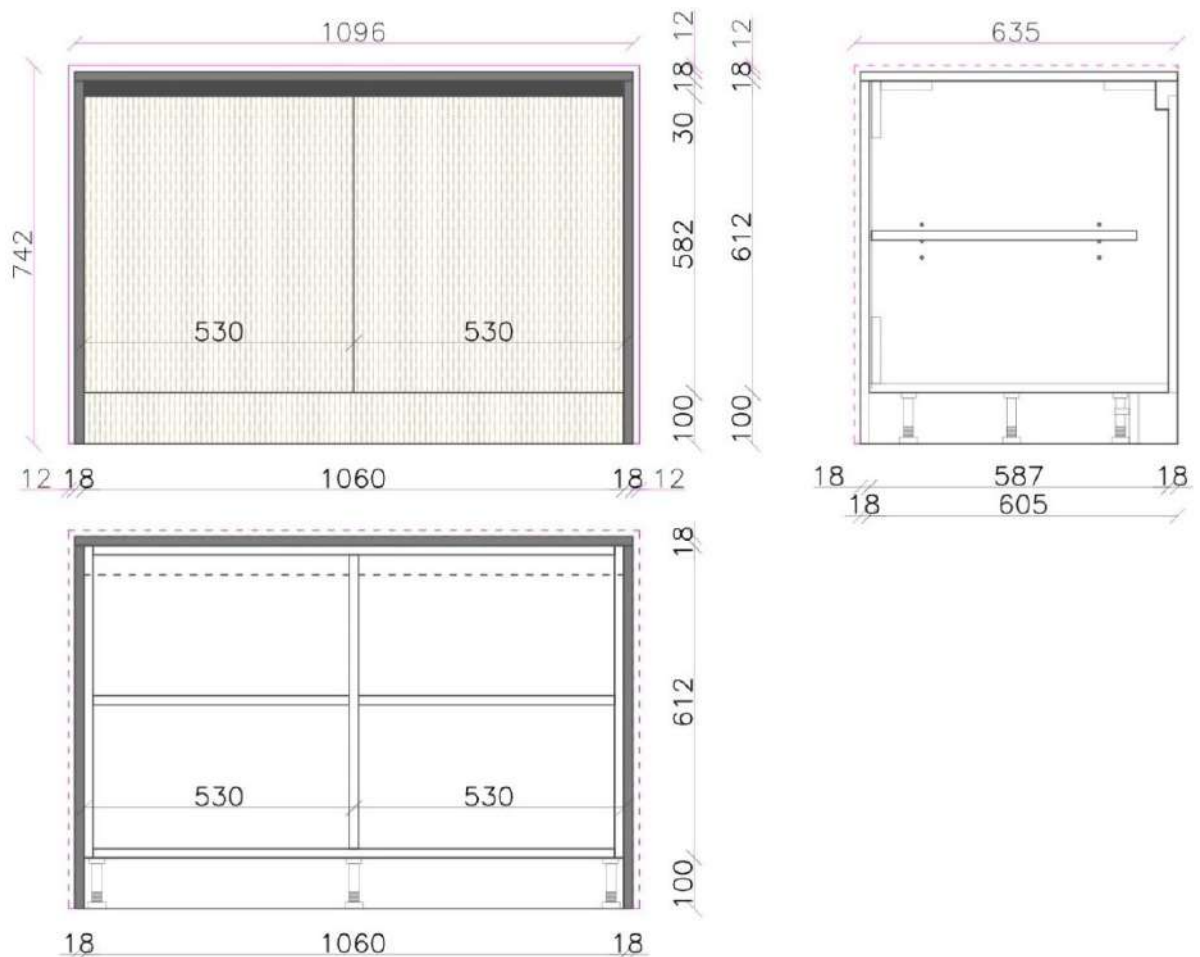
Material model for visible outer parts : Melamine faced chipboard model H3157 ST12 d=18mm

Material model for toe kick and inner parts : Melamine faced chipboard model black 190PE d=18mm

Tin planter boxes with drainage holes for natural flowers: ?

5. Shop Desk

Shop Desk – storage element with gross dimensions of 74.2 x 109.6 x 63.5 cm. The shop desk consists of a frame made from black melamine faced chipboard d=18mm (banded with an ABS/PVC edge band on all visible and invisible edges), while in the back a black faced hardboard d=3mm is installed along with connector cabinet stretchers (for mounting the additional back panel made from Laminam). The shop desk is set on top of 10cm PVC adjustable furniture legs on which a 10cm toe kick is installed. The toe kick along with the doors are made from melamine faced chipboard model H3157 ST12 d=18mm (banded with ABS edge band on all edges). The opening of the doors is solved with a horizontal (L) black Gola profile – concealed handle. The shop desk is wrapped on the top, back and sides with visible connector moldings made from black melamine faced chipboard d=18mm model 190PE on which the Laminam d=12mm is glued on. All of the hinges are DTC with soft close mechanism. The opening is solved with a Gola horizontal profile.



Material model for the frame: Melamine faced chipboard model black d=18mm

Material model for the doors and toe kick: Melamine faced chipboard model H3157 ST12 d=18mm

Material model for connector moldings: Melamine faced chipboard model 190PE d=18mm

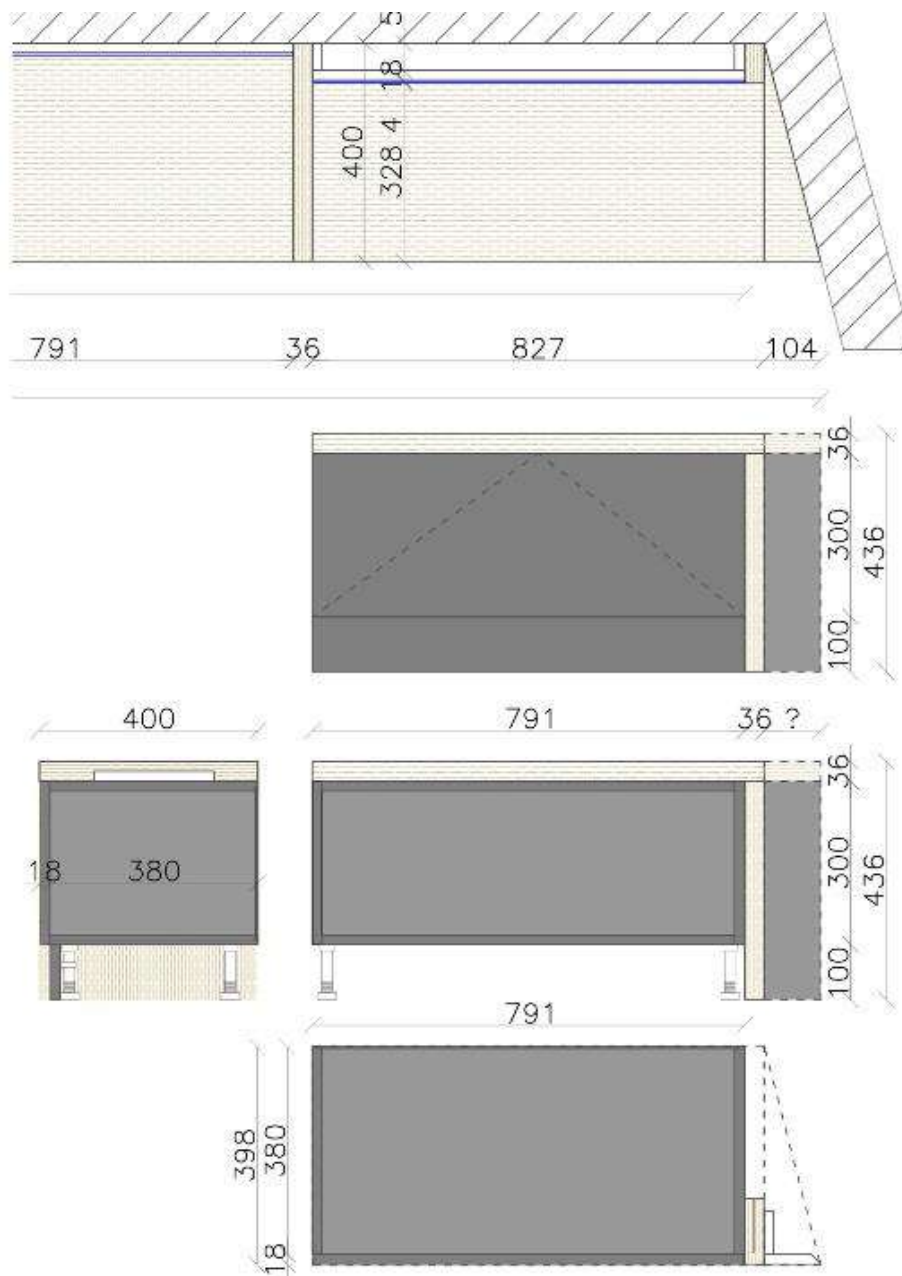
Material model for concealed handle: Black horizontal (L) Gola profile

Laminam model: Travertino Grigio 12mm

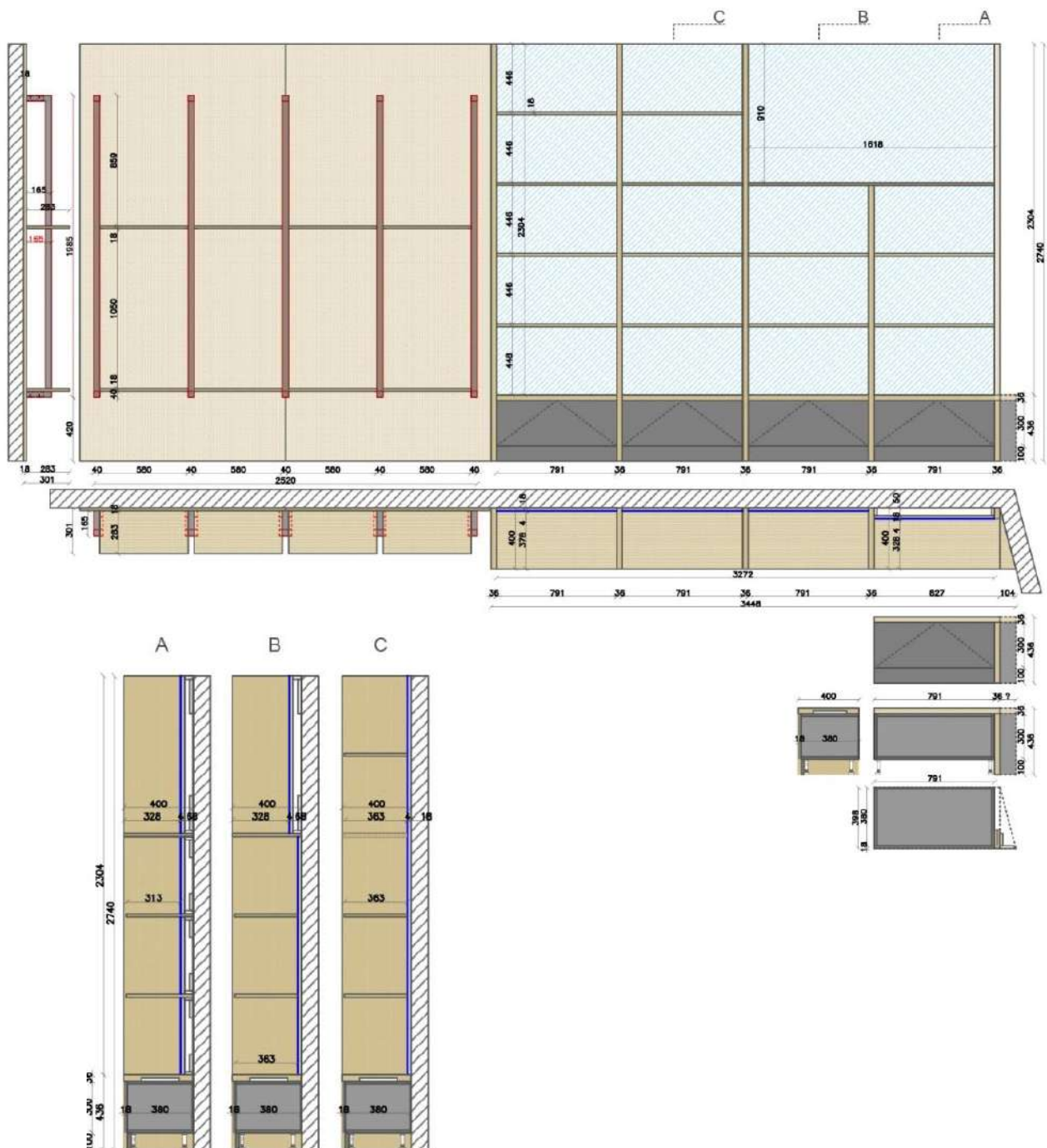
6. Shop shelves

Left section of the shop shelves i.e. shelves made from melamine faced chipboard placed on metal brackets behind which there is a wall panel consisting of two vertical pieces of melamine faced chipboard model H3157 ST12 d=18mm (banded with ABS edge band on all edges). The gross dimensions are 274 x 252 x 1.8cm. The shelves are explained in detail in Furniture piece no.7 from this document.

Right section of the shop shelves with gross dimensions of 274 x 344.8 x 40 cm consisting of bottom section-storage cabinets with a frame made from black melamine faced chipboard d=18mm (banded with ABS/PVC edge band on all visible and invisible edges) and a back made from black faced hardboard d=3mm. The cabinets are set on 10cm adjustable PVC furniture legs on which a toe kick is installed. The toe kick along with the cabinet doors are made from melamine faced chipboard PE190 d=18mm (banded with ABS edge band on all edges). The opening is solved with a touch mechanism and a drop-down mechanism VIM for the lower doors. All of the hinges are DTC with soft close mechanism.



As a countertop, duplex boards from melamine faced chipboard are placed, model H3157 ST12 d=36mm (18+18mm). These boards also make up the floor of the top section – which are organized as fixed shelves with a thickness of d=18mm installed on the duplex sides made from melamine faced chipboard model H3157 ST12 d=36mm (18+18mm). For the back of the top section there is a classic mirror d=4mm which is glued on to a stock melamine faced chipboard. The left (A) vertical section doesn't have a right side on which the shelves can be installed on, so for stability, the shelves here are placed in between the fixings on which the mirror is glued on i.e. the mirror is divided between all of the shelves (see cross section A). In this vertical section, the shelves have a usable surface which is 5cm smaller in depth in comparison to the other vertical sections. As a finishing side there is a duplex board from melamine faced chipboard H3157 ST12 d=36mm (18+18mm) with a depth which is enough to cover and hide the constructional moldings and fixings and the thickness of the mirror itself. Furthermore, the same line follows to the bottom and it finishes to the right with a mask cut and prepared according to the angle which appears on the wall.



Material model for the frame: Melamine faced chipboard black d=18mm

Material model for the front and toe kick: Melamine faced chipboard model 190PE d=18mm

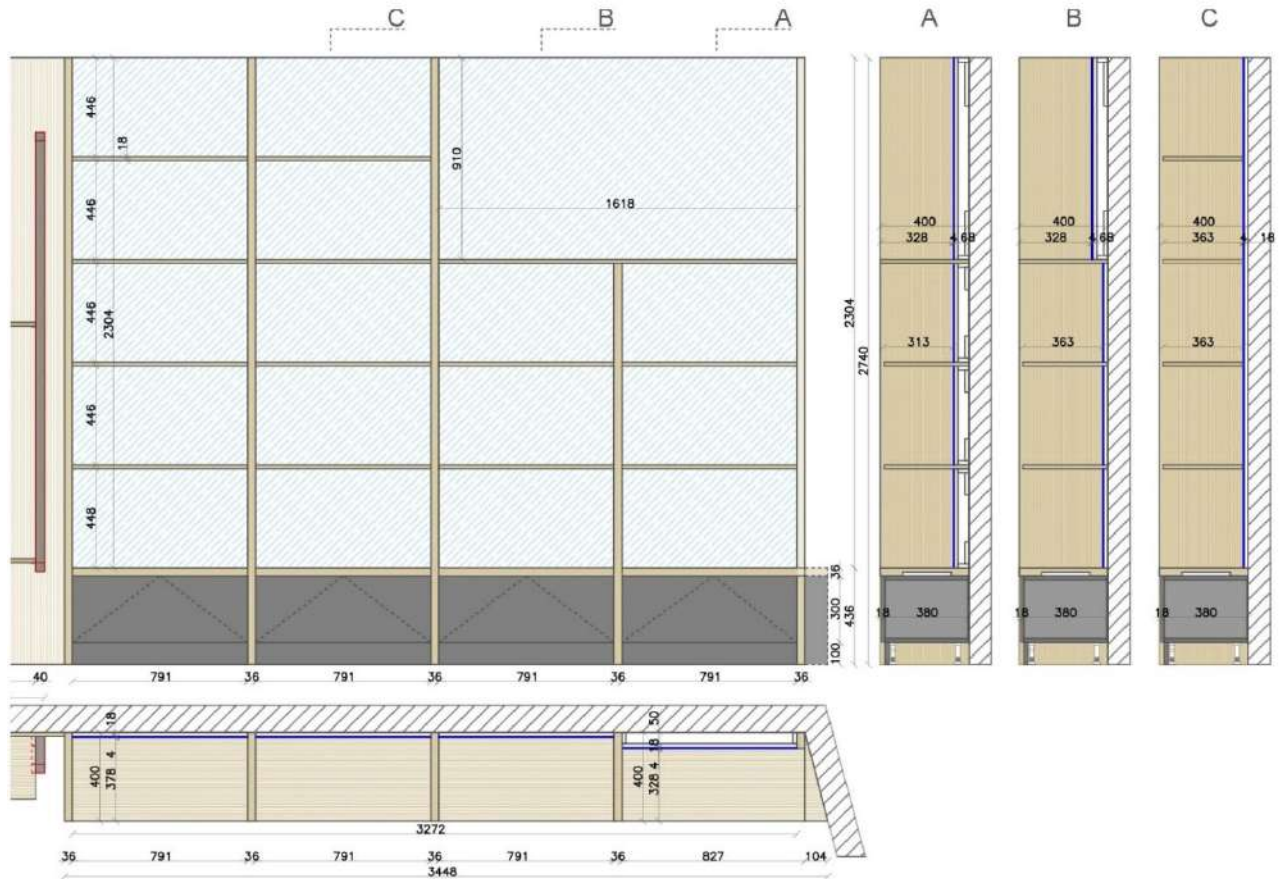
Material model for visible surfaces: Melamine faced chipboard model H=3157 ST12 d=36/18mm

Handle model: Touch mechanism

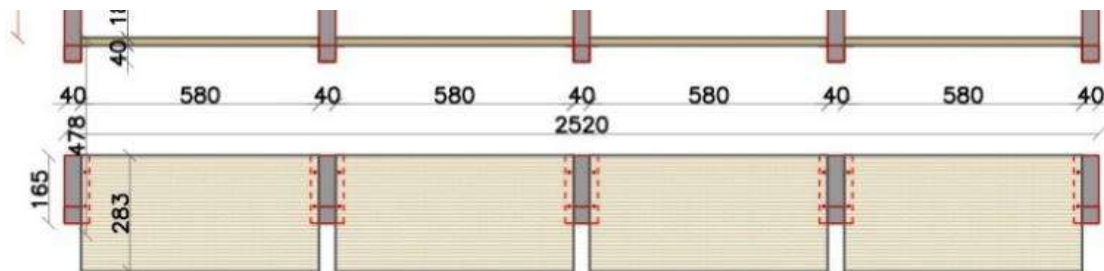
Mirror model: Classic mirror d=4mm

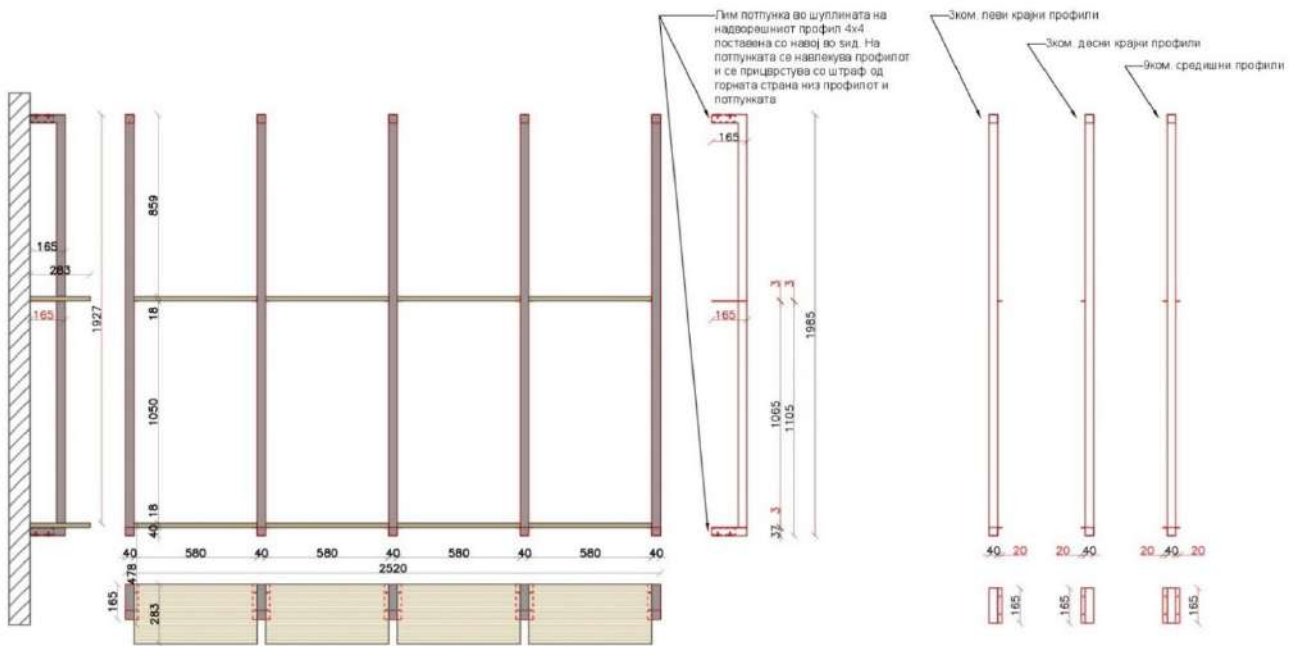
Drop-down mechanism model: VIM

7. Decorative elements



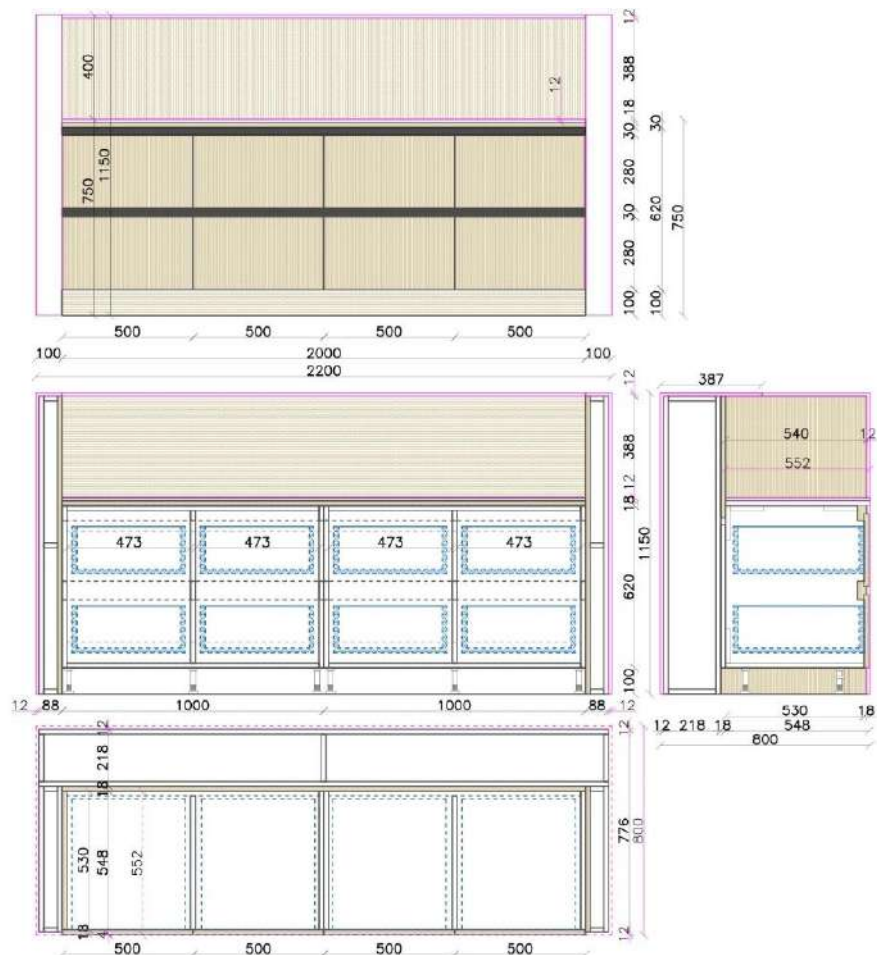
Decorative wall elements (x3) made from metal profiles 4 x 4 cm painted electrostatically in black along with sheet metal tie plates on which the shelves made from melamine faced chipboard model H3157 ST12 d=18mm (banded with ABS edge band on all edges) are installed. The height of the profiles is 198.5 cm, while the width of the shelves between the profiles is 58 cm.



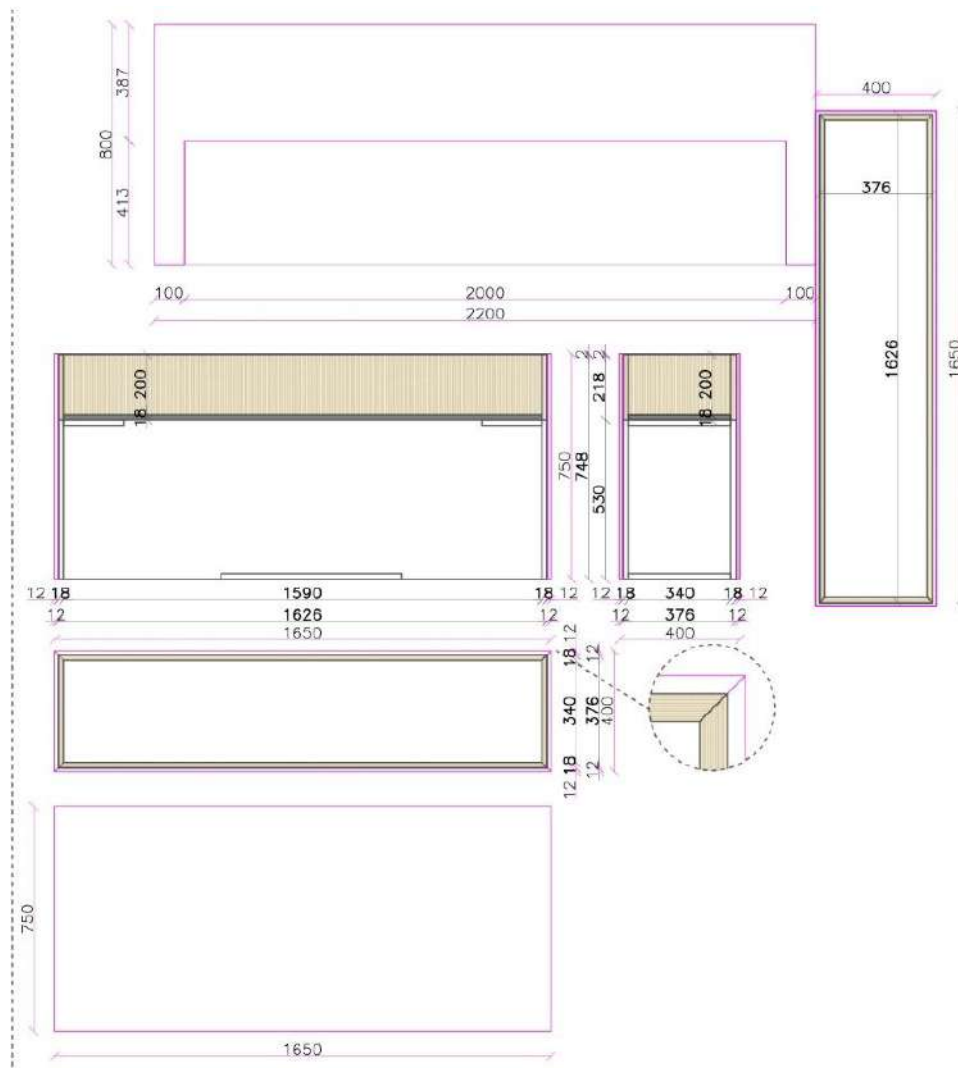


9. Reception

Reception desk with gross dimensions of 115 x 220 x 80 cm consisting of multiple elements with a frame made from black melamine faced chipboard d=18mm (banded with an ABS/PVC edge band on all visible and invisible edges), where on the back of the frame there are installed cabinet stretchers which serve as auxiliary pieces for mounting the box on which the Laminam will be applied.



The individual elements are placed on 10cm adjustable PVC furniture legs on which a toe kick is installed. The toe kick as well as the fronts of the drawers are made from melamine faced chipboard model H3157 ST12 d=18mm (banded with an ABS edge band on all edges). The opening is solved with a horizontal (L) black Gola profile – concealed handle in the top section as well as a horizontal (C) black Gola profile in the middle section. On top of the elements there is installed a surface panel made from black melamine faced chipboard (edged with an ABS edge band model H3157 on all edges) on which the Laminam is glued to, serving as a worktop. The furniture elements are wrapped from three sides with an underframe – boxes whose visible parts are made from melamine faced chipboard model H3157 ST12 d=18mm. The visible parts are located on the interior side of the desk, while the outer sides from the underframe are wrapped in Laminam d=12mm. The model of the mechanism for the drawers is Hettich Quadro25, with a melamine faced chipboard frame and soft close mechanism.



Planter box next to reception desk

Planter box for artificial flowers (right drawing) with gross dimensions of 75 x 165 x 40 made in the form of a box from melamine faced chipboard H3157 ST12 d=18mm (banded with ABS edge band on all edges) with a depth of 20cm and an underframe in the bottom section made from stock melamine faced chipboard. The frame is joined with mitered joints in the top section, while all visible surfaces are wrapped with Laminam d=12mm.

Material model for the frame: Melamine faced chipboard black d=18mm

Material model for the fronts and visible parts: Melamine faced chipboard model 190 PE d=18mm

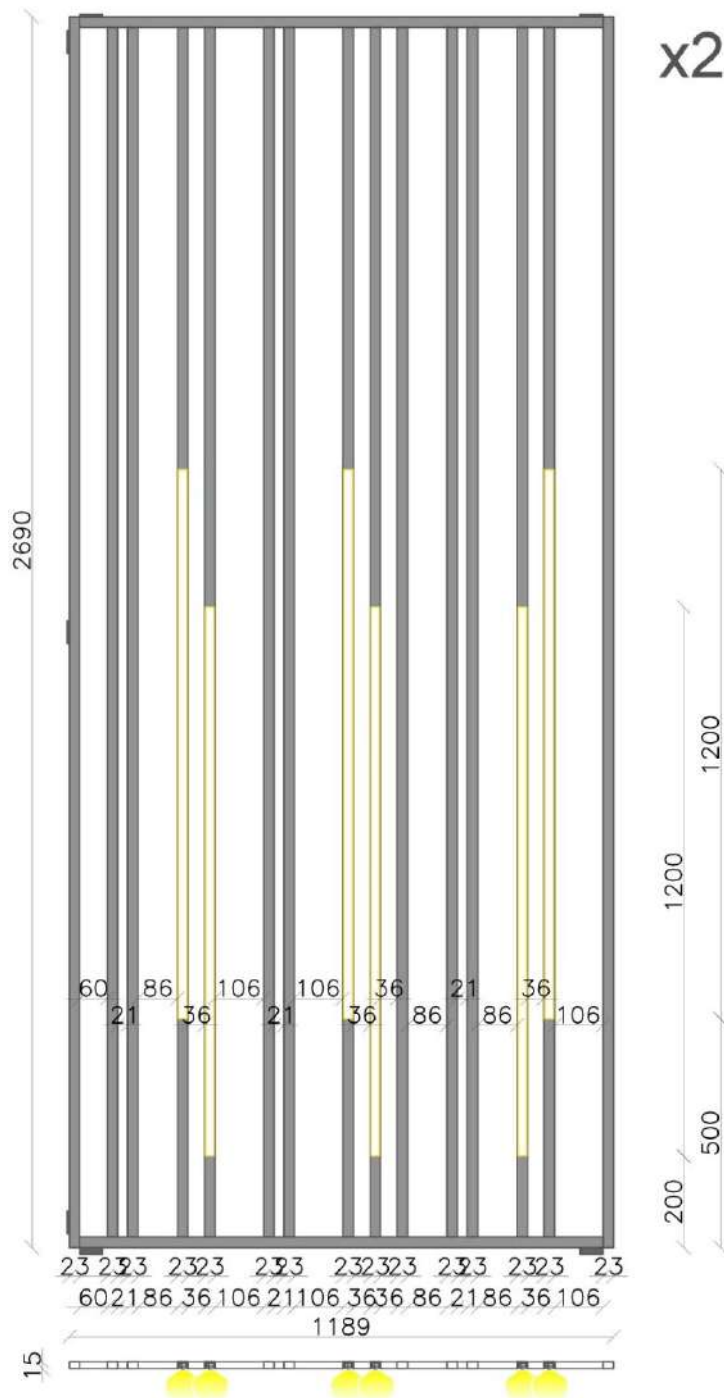
Laminam model: Travertino Grigio 12MM

Handle model: Black Gola profile

Drawers mechanism model: Hettich Quadro25

10. Metal room dividers

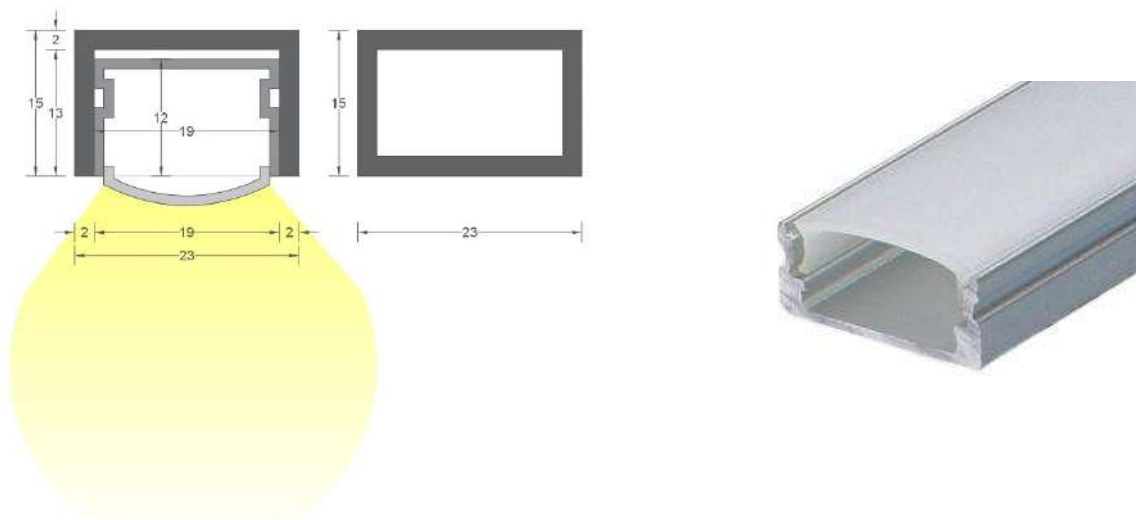
Metal room dividers with gross dimensions of 269 x 119 x 1.5 cm consisting of 2.3 x 1.5 metal profiles (frame and verticals) electrostatically painted in black with tie plates for wall and floor mounting. In the section of the two oppositely placed metal room dividers, the investor needs to



conduct electricity (electrician appointed by the investor) and after the installation of the dividers the electrician needs to connect the LED lighting. The recessed channels for the LED lighting are placed on the front side of the metal dividers, in the gaps made on the metal profiles with the dimensions shown in the drawing.

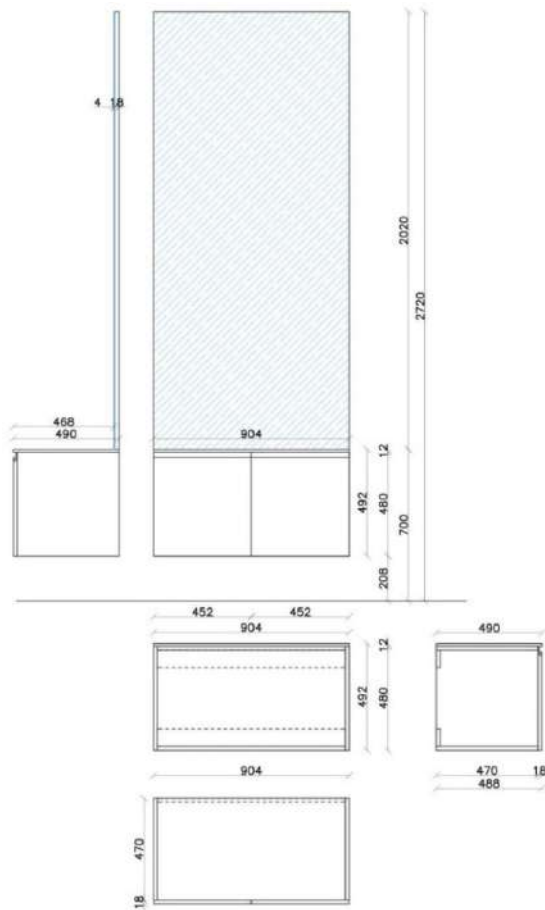
Metal profile model: 2.3 x 1.5 cm electrostatically painted black profiles

Model for LED lighting channels: Standard aluminum profile for LED lightings

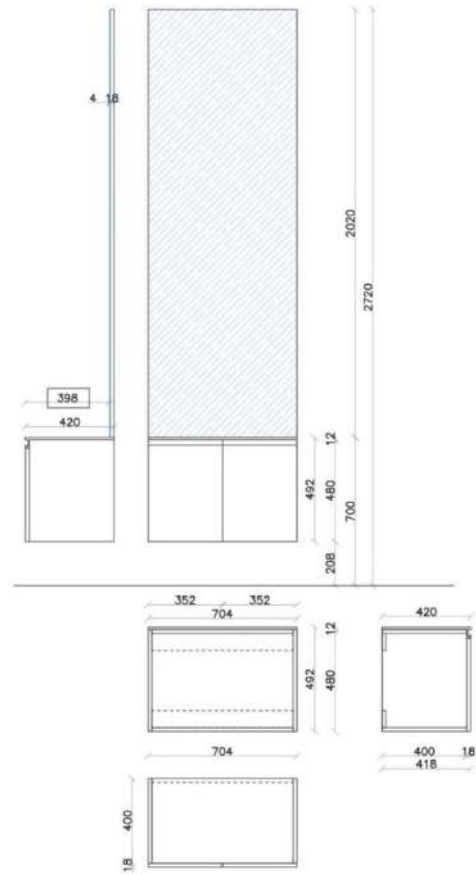


11. Bathrooms

Bathroom cabinet 49.2 x 90.4 x 49 and 42 x 70.4 x 42 with a frame made from one faced white MDF d=18mm painted in white with a smooth matt finish and a top surface and back cabinet stretchers (used for mounting the cabinet to the wall as well as a foundation for gluing the Laminam) made from white melamine faced chipboard d=18mm (banded with ABS/PVC edge band on all visible and invisible edges). The furniture cabinets are installed directly on the wall. The opening of the cabinet doors made from MDF is solved in the top section with a concealed handle which is CNC scalloped. All of the hinges are DTC with soft close mechanism. The Laminam, which is cut beforehand for a top mount sink, is glued on as a worktop. The sink opening is positioned according to the technical specification for the sink model – provided by the investor. Above the cabinets, a mirror is placed – classic model d=4mm with a machined edge, glued on a piece of melamine faced chipboard (banded with white ABS edge band). The mirror is the same width as the cabinets (90.4 / 70.4 cm) and with a height which is 4cm lower than the room ceiling (necessary in order for it to be installed safely on the wall).



F11.1



F11.2

Model for the frame: One sided white MDF board d=18mm white with a smooth matt finish

Model for the fronts and doors: One sided white MDF board d=18mm white with a smooth matt finish

Mirror model: Classic mirror 4mm with a machined edge, glued onto a white laminated particle board d=18mm

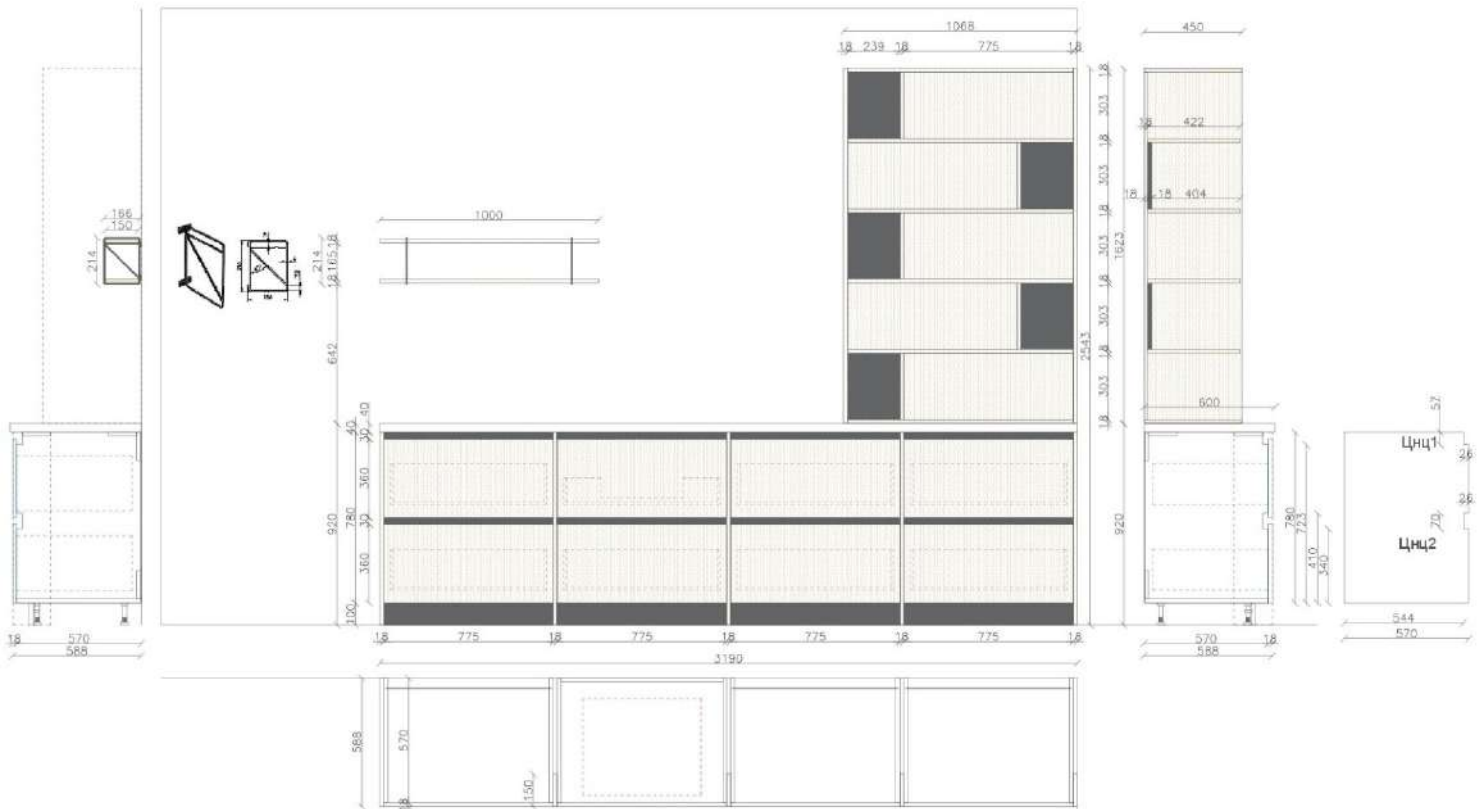
Handle model: CNC horizontal handle

Laminam model: Travertino Grigio 12mm

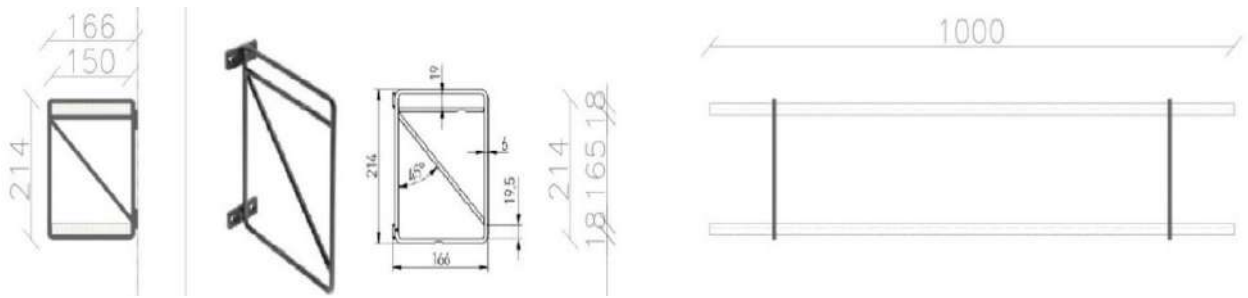


12. Kitchen

Kitchen with a total length of 3.19 m consisting of bottom cabinets with a frame made from melamine faced chipboard model black 190PE d=18mm (banded with ABS/PVC edge band on all visible and invisible edges) and a back made from black faced hardboard d=3mm and cabinet stretchers on the kitchen sink cabinet. The front and sides of the cabinets as well as the decorative moldings between them are made from melamine faced chipboard model H1113 ST10 d=18mm (banded with an ABS edge band on all edges). The cabinets are set on 10cm adjustable PVC furniture legs on which a 10cm PVC matte black toe kick is installed in between each of the cabinets. The organization of the cabinets is done with deep drawers model Vision Top – Syskor H185mm with metal side frames, while the drawers on the sink cabinet are adapted according to the plumbing. The opening is solved with a concealed black Gola profile (bottom drawers are opened by a horizontal middle C profile, the top with the middle C profile and the top L profile). The kitchen is finished with a standard laminated countertop model F637 ST16 d=4cm and a matching skirting.



Open shelving with gross dimensions of 162.3 x 106.8 x 45 cm placed on the countertop in the right kitchen section with a frame, shelves and a back made from melamine faced chipboard H1113 ST10 d=18mm (banded with ABS/PVC edge band on all visible and invisible edges). Besides the back made from melamine faced chipboard H1113 ST10 there are also decorative applications made from black melamine faced chipboard model 190PE d=18mm. The console shelves 100 x 15 x 1.8 cm (x2) are made from melamine faced chipboard model H1113 ST10 d=18mm (banded with ABS edge band on all edges) and installed on decorative black metal brackets.



Material model for the frame: Melamine faced chipboard model black 190PE d=18mm

Material model for the fronts and visible surfaces: Melamine faced chipboard model H1113 ST10 and 190PE d=18mm

Material model for the worktop: F637 ST16

Handle model: Black Gola profile

Drawers mechanism model: Vision Top – metal side frames

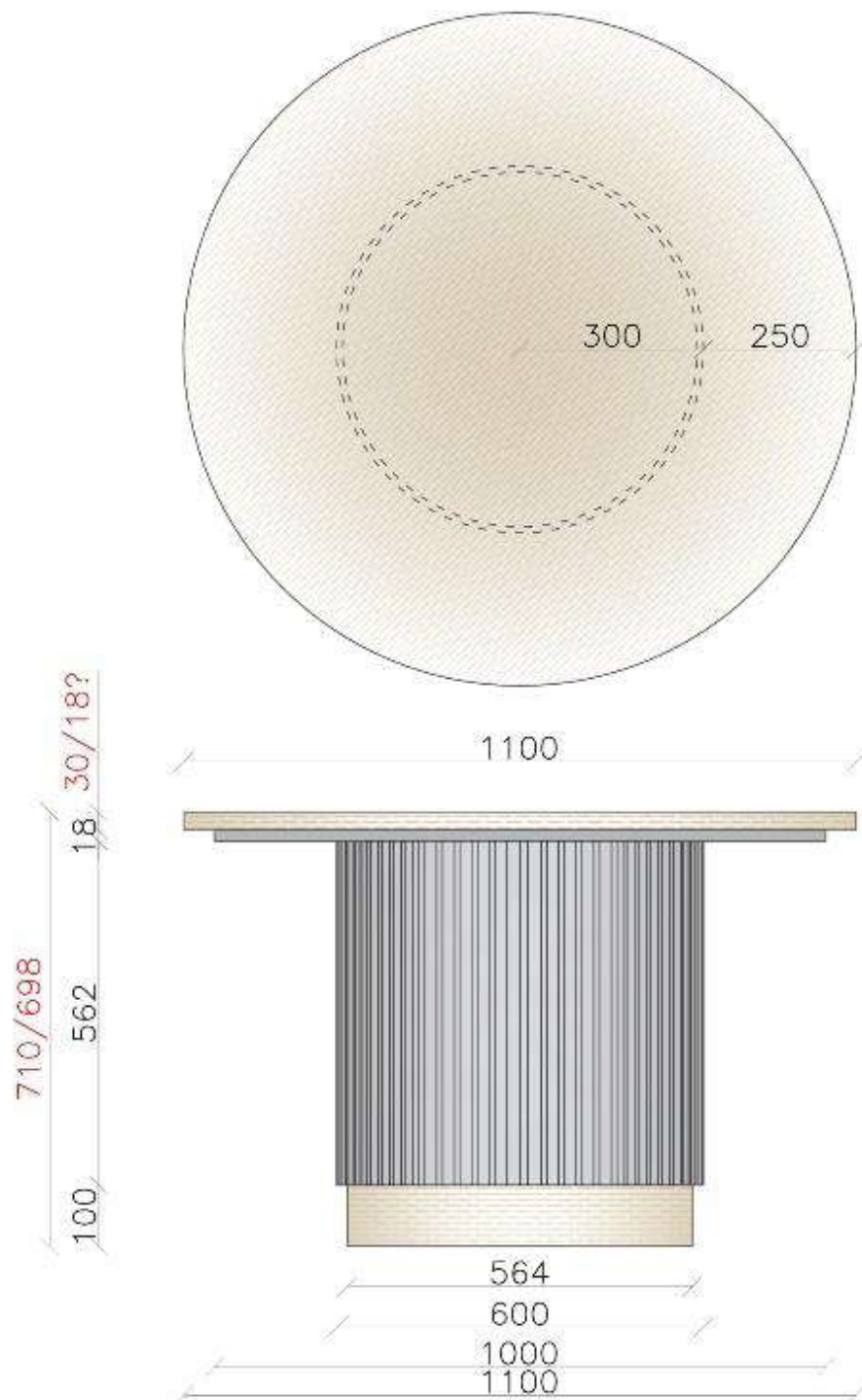


12.1 Kitchen (dining) table

Dining table with a diameter of $\Phi=110\text{cm}$ and a total height of 71/69.8 cm, with a base consisting of an underframe on which a CNC fluted MDF panel is glued to, painted in black with a smooth matt finish. The table top is made from oak wood veneered chipboard d=18/30mm in a round shape banded with a veneer edge band around the edge. *The edge band has a visible joint because of the round shape*. On the very bottom of the table base there is a round oak wood veneered toe kick. *The wood veneer has a visible joint because of the round shape*. The wood veneered tabletop as well as the kick top are stained with a wood stain similar to the tone of the melamine faced chipboard of which the face of the kitchen is made from (H1113 ST10).

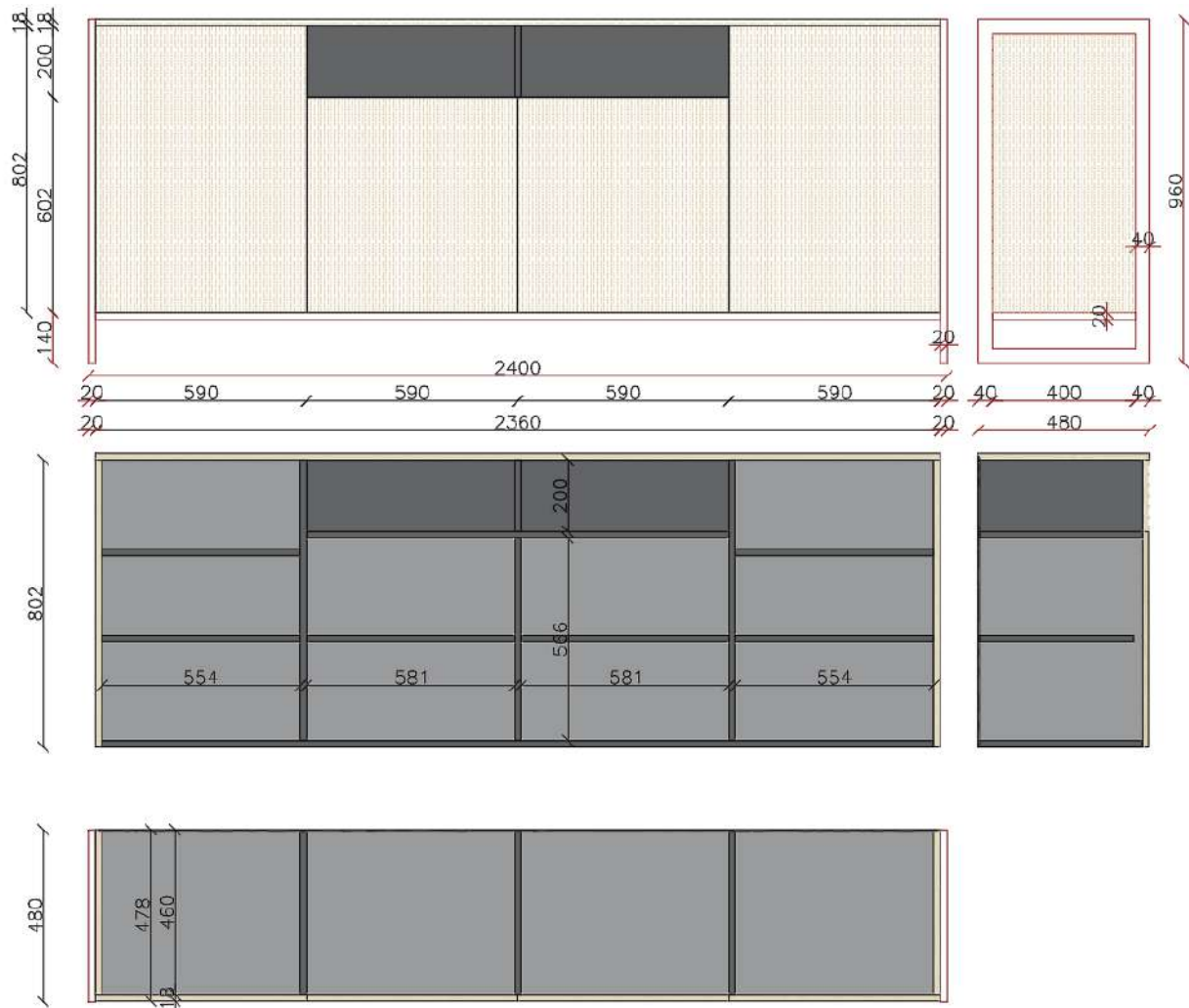
Material model for the table top and kicktoe: oak wood veneered chipboard d=18/30mm

Material model for the base: CNC fluted MDF panel -black smooth matt finish



13. Shelf- storage cabinets

Storage cabinets with gross dimensions of 96 x 240 x 48 cm (x3) with a frame and open section made from melamine faced chipboard model black 190PE d=18mm (banded with ABS/PVC edge band on all visible and invisible edges), while the back is made from black faced hardboard d=3mm. The structural visible sides, top surface as well as the doors are all made from melamine faced chipboard model H3157 ST12 d=18mm (banded with ABS edge band on all edges). The storage cabinet is set on a metal construction made from 4 x 2 cm metal profiles, electrostatically painted in black.



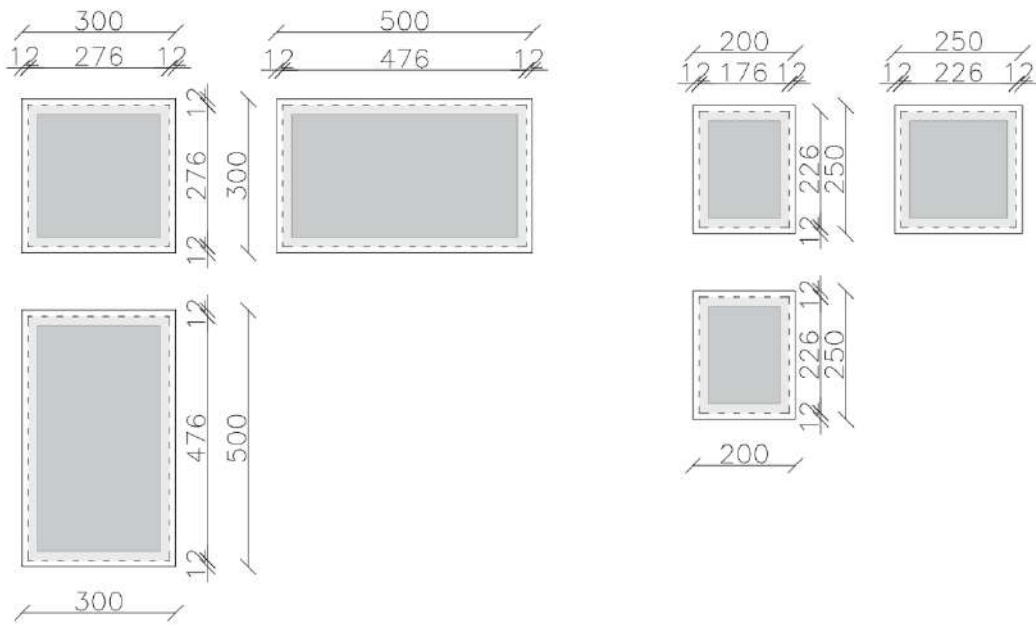
Material model for the frame: Melamine faced chipboard model 190PE d=18mm

Material model for the fronts and all visible surfaces: Melamine faced chipboard H3157 ST12 and 190PE d=18mm

Metal profile model: 4 x 2 cm electrostatically painted black metal profile

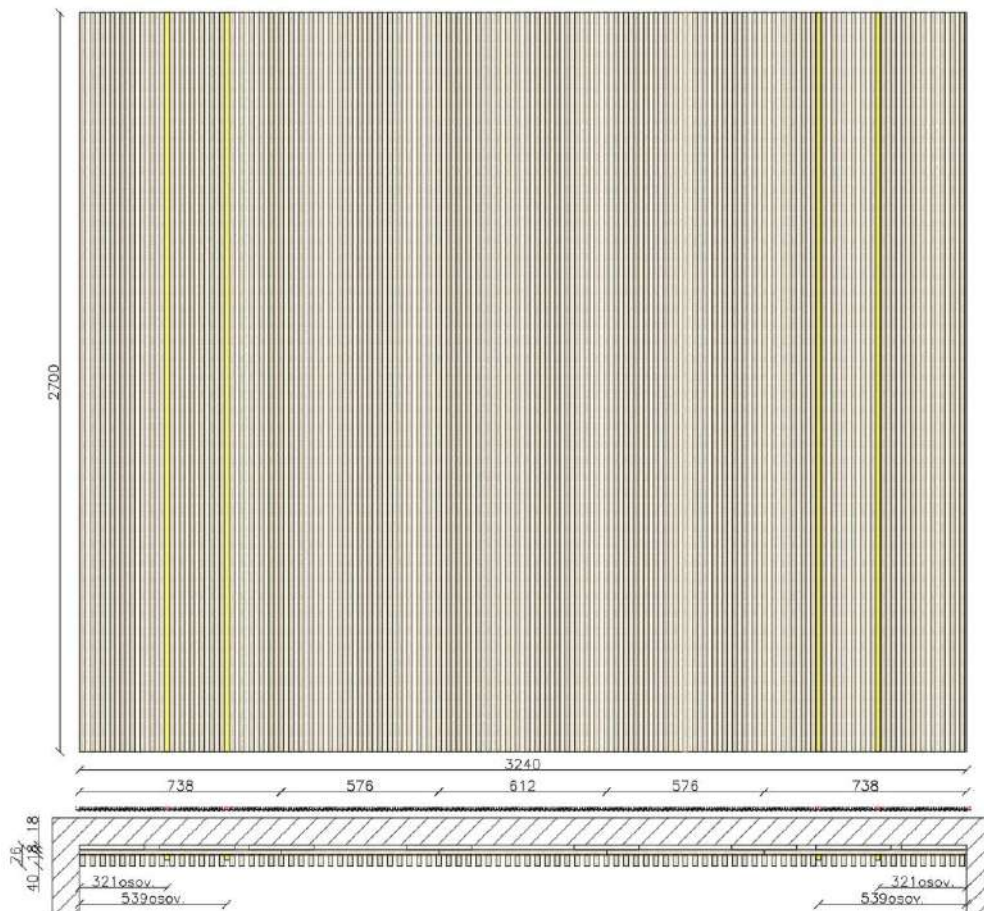
14. Laminam decorative boxes

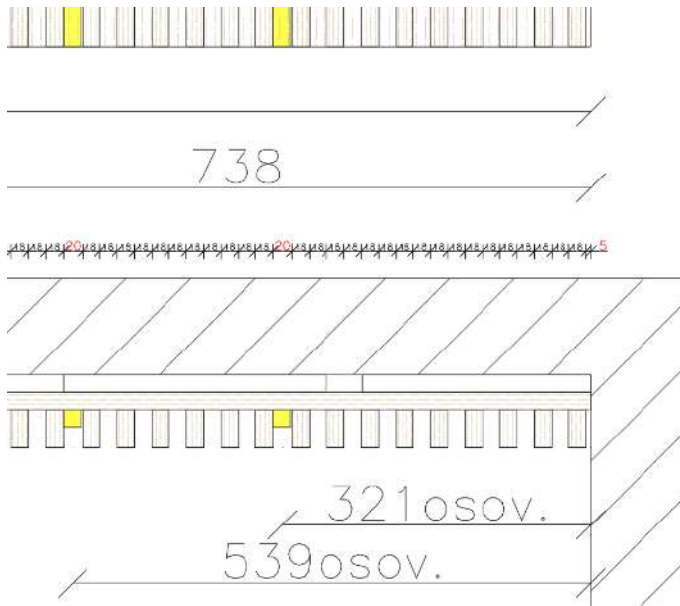
Decorative boxes with gross dimensions of 50 x 30 x 30 cm (x3) and 25 x 20 x 25 cm (x3) made from a underframe wrapped in Laminam d=12mm from all sides.



14.1 Slat wall panels

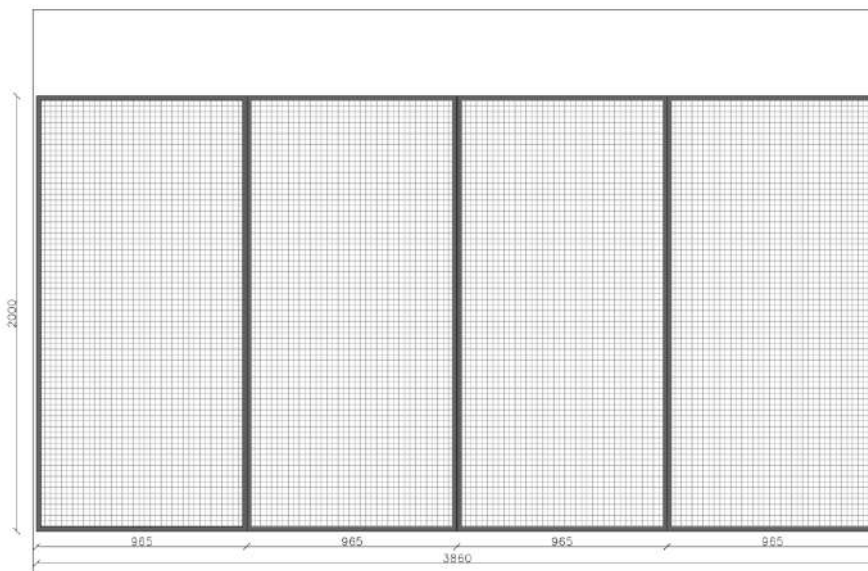
Slat wall panels with gross dimensions of 270 x 324 x 7.6 cm (x3) with a front and back made from melamine faced chipboard H3157 ST12 d=18mm (banded with ABS edge band on all edges). The LED channels are installed on the back. The electrical installations, LED lighting and the power supply for the LED are the responsibility of an electrician appointed by the investor.





15. Gridwall wire mesh panels

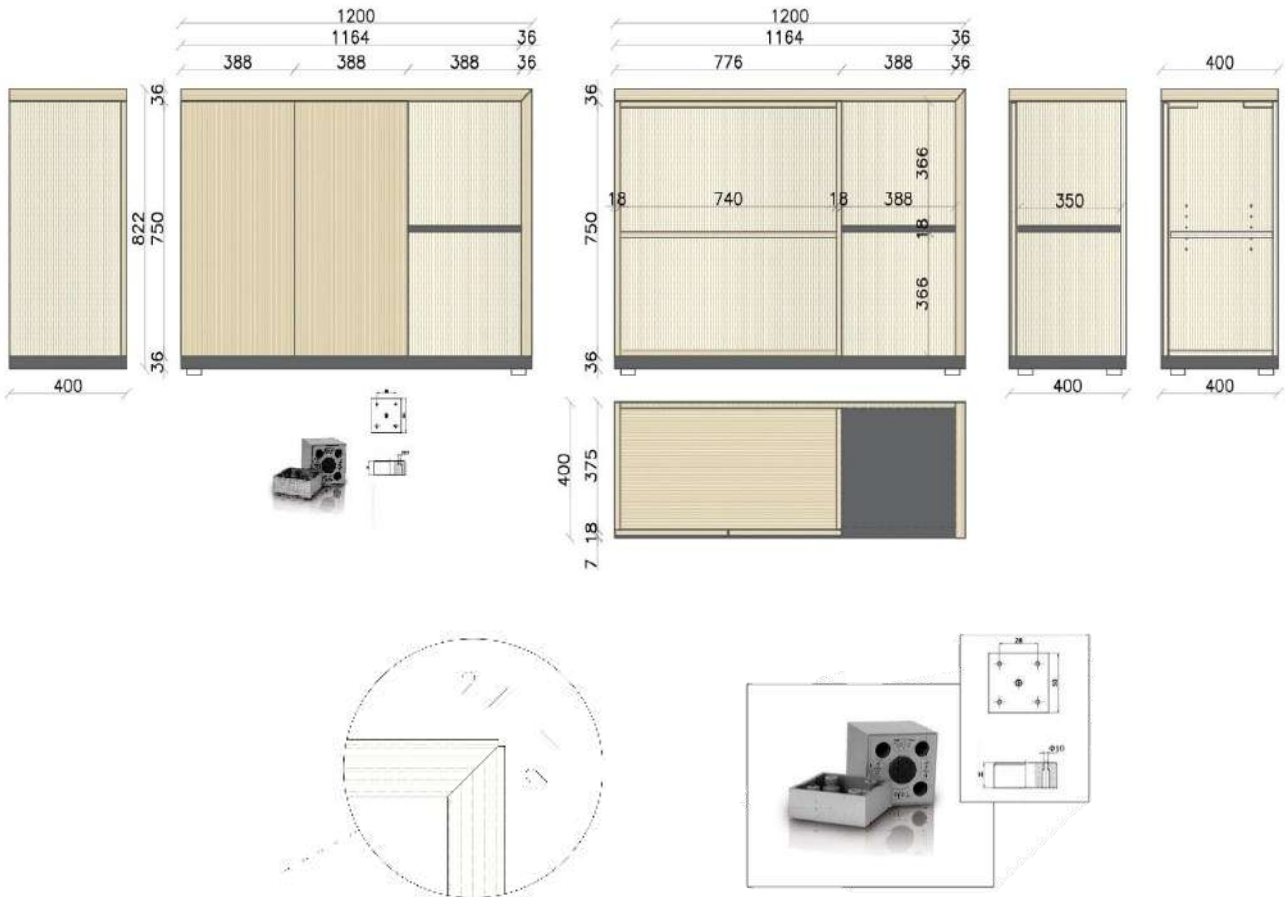
Gridwall wire mesh panels with gross dimensions of 200 x 96.5 x 2 (x8) installed in sets 200 x 386 x 2 (x2) made from electrostatically painted black metal. The mesh panels are installed directly to the wall and are independent from each other.



16. Coffee station

Coffee station cabinet with gross dimensions of 82.2 x 120 x 40 cm with a frame, front and back all made from melamine faced chipboard H3157 ST12 d=18mm (banded with ABS/PVC edge band on all visible and invisible edges). The top surface and right side are duplex boards (18+18mm) made from melamine faced chipboard model H3157 ST12 d=36mm joined with a special highlighted miter joint. A fixed shelf made from melamine faced chipboard model 190PE d=18mm is placed in the open section. The station cabinet is set on a duplex floor board (18+18mm) made from melamine faced chipboard model 190PE d=36mm and 3cm adjustable black decorative legs.

In the closed section, the sides are perforated which allows the shelf to be adjusted.
 All of the hinges are DTC with soft close mechanism. The opening is solved with a touch mechanism.
 In order for the touch mechanism to function properly, there is a gap of 3mm between the frame and the doors.



Material model for the frame and visible parts: Melamine faced chipboard H3157 ST12 and 190PE d=18mm

Handle model: Touch mechanism

Legs model: 3cm Toyo adjustable black legs



H1113 ST10
Brown Kansas Oak

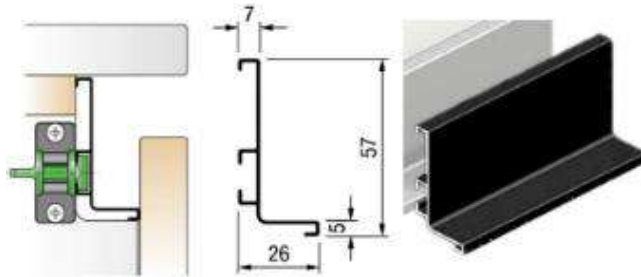
EGGER

H3157 ST12
Vicenza Oak

EGGER

F637 ST16
White Chiamiz

EGGER



Gola профил – L SYSKOR Шпанија



Quadro 25 with Silent System,
partial extension runner for wooden drawer



Vision Top Slim Box



Notice:

Manufacturing deadline: 40 working days from payment and final measurements

All of the electrical and plumbing installations are the responsibility of the investor

Installing furniture start date: determined by negotiation process length and measurements dates. Acknowledged in the beginning of the manufacturing process.

Manufacturing guarantee: 1 year guarantee for the manufactured furniture

The guarantee does not include mechanical damages, damages by exposure to water, humidity or steam

Arranged by: *Team of Wood Mark*

For Wood Mark

Name and Surname of the Investor